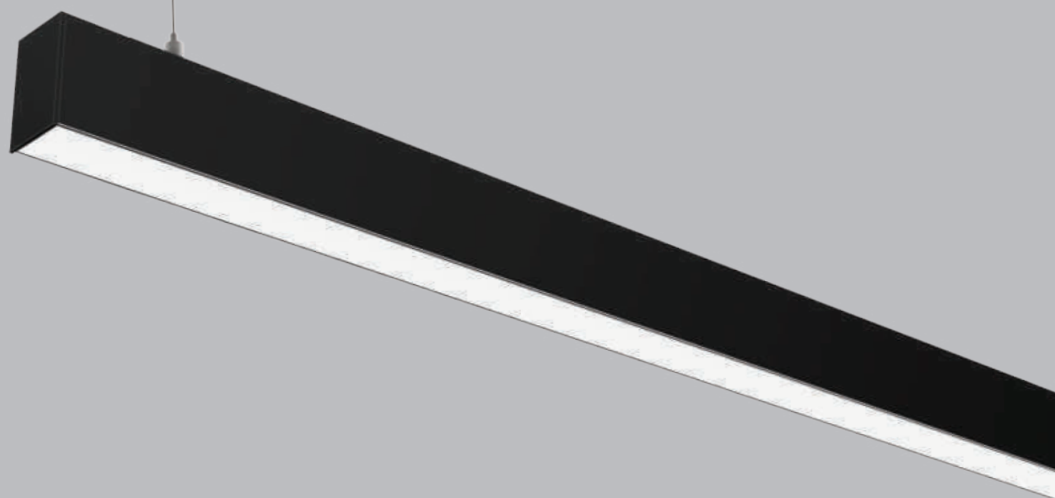
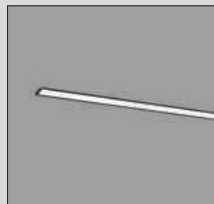


VIRAJ 45

divinity lights





## VIRAJ 45

Viraj 45 linear fixture has :

- No visible screw
- Surface powder coated
- Luminaire housing of extruded aluminium
- LED PCB mounted on insert design with heat sink
- Snap-fit system
- Bottom opening for easy maintenance
- Pendant with cable suspension
- M6 bolt for M6 fastener
- High-performance PMMA diffuser
- Energy-efficient LED

### Quick Info

CRI  $\geq$  80/ 90/ 95

3000K/ 4000K/ 5700K/ 6500K

Tunable White 2700K-6500K

Up to 100lm/W

ON-OFF/ON-OFF (FLICKER FREE)

DALI-2 / DALI-2 DT8 / D4i / DALI +

POE (Power Over Ethernet)

SDCM<3

PMMA Diffuser

L70 @ 50,000h

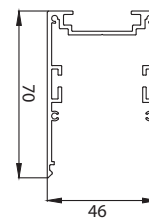
Aluminium

### Types

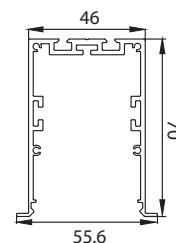
Pendant/ Surface/ Recessed

### Single Line Diagram

Pendant / Surface



Recessed

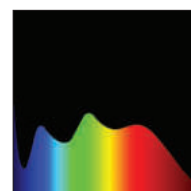


### Colours



### Light Distribution

Direct Direct-Indirect



CRI  $\geq$  80/ 90/ 95



TUNABLE  
WHITE

## VIRAJ 45



### VIRAJ 45 ( DIRECT )

Product Order Code	System Power	Dimensions
1002-1  1	8W	L = 300mm
1002-1  2	16W	L = 600mm
1002-1  3	24W	L = 900mm
1002-1  4	35W	L = 1200mm
1002-1  5	70W	L = 2400mm




### VIRAJ 45 ( DIRECT-INDIRECT )

Product Order Code	System Power	Dimensions
1002-  1	15W	L = 300mm
1002-  2	30W	L = 600mm
1002-  3	40W	L = 900mm
1002-  4	60W	L = 1200mm
1002-  5	120W	L = 2400mm

## Order Options

<b>Distribution</b>		▼
Direct		1
<b>Direct-Indirect</b>		
Up-50% / Down-50%		2
Up-30% / Down-70%		3
Up-70% / Down-30%		4
Up-20% / Down-80%		5
Up-80% / Down-20%		6
<b>Lumen Type</b>		☑
Low		1
High		2
<b>CCT (Colour Temperature)</b>		●
3000K		1
4000K		2
5700K		3
6500K		4
Tunable White 2700K-6500K		5
<b>CRI</b>		●
>80		1
>90		2
>95		3
<b>Beam Angle</b>		
110°		
<b>Control</b>		■
ON-OFF		1
ON-OFF (FLICKER FREE)		2
DALI-2		3
DALI-2 DT8		4
DALI +		5
D4i		6
POE (Power Over Ethernet)		7
<b>Mounting Type</b>		▭
Pendant		1
Surface		2
Recessed		3
<b>Material Colour</b>		○
Black		1
White		2
Grey		3

## Accessories


Product Order Code	Accessories Name	Accessories Image
1002-01 <input checked="" type="checkbox"/> <input type="checkbox"/> <input type="checkbox"/>	LED PCB	
1002-02	Suspension Wire	
1002-03	PMMA Diffuser	
1002-04	Profile Connector	
1002-05 <input type="checkbox"/> <input checked="" type="checkbox"/>	Profile Endcap	

## Order Options

### Lumen Type

- Low 1
- High 2

### CCT (Colour Temperature)

- 3000K 1
- 4000K 2
- 5700K 3
- 6500K 4
- Tunable White 2700K-6500K  5

### CRI

- >80 1
- >90 2
- >95 3

### Material Colour

- Black  1
- White  2
- Grey  3